

Applying Tordon RTU to Woody Stumps

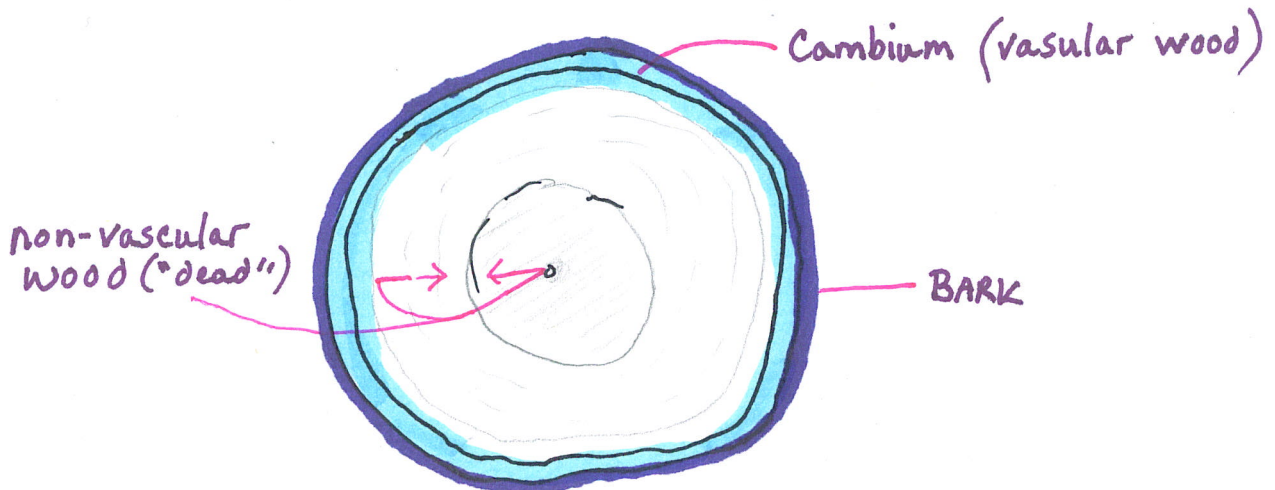
Be safe - always wear rubber gloves and preferably long-sleeved shirts, closed-toe shoes and long pants when using stump-application herbicide. This product is blue so you can see where it has been applied.

- Tordon RTU should be applied to cut stumps immediately after cutting (except eastern red cedar... Tordon application is not necessary with this plant).
- In the case of multi-trunked shrubs and trees, Tordon RTU should be applied to ALL exposed stumps of the cut woody plant.

For small diameter stumps (1/2 inch or less), apply Tordon RTU to the entire stump surface (do not let it drip or pour down the sides of the stump)



For larger diameter stumps (greater than 1/2"), it is crucial to apply Tordon RTU just inside the bark. This is the cambium layer... the living tissue of the tree. Applying herbicide to the center of the stump is not necessary (it's dead wood).



Warning: do not apply Tordon RTU if it is raining or will rain within 2 hours, or if there is a lot of snow on the ground. When first applied, Tordon RTU can travel through wet soil and will damage surrounding plants.